

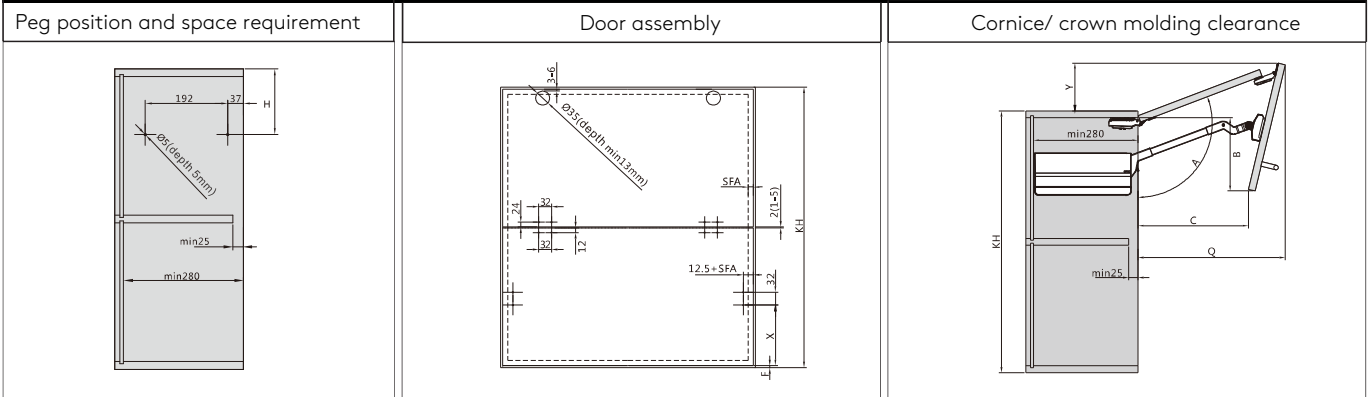


Models	Height	Weight (KG)
DTCST04AH02A	650-729H	11.5-19.8
DTCST05AH02A	730-799H	10.5-18.1
DTCST06AH02A	800-879H	9.5-16.5
DTCST07AH02A	880-959H	8.7-15.1
DTCST08AH02A	960-1040H	8.0-13.9

Features
<ul style="list-style-type: none"> <li>• Provides 3D adjustments for both fronts (height, side &amp; depth).</li> <li>• Suitable for doors with overall height 650-1040</li> <li>• Door widths up to 1200mm wide only</li> <li>• Weight capacity up to 19.8kgs</li> <li>• White (Standard colour)</li> <li>• Adjustable Soft-closing</li> <li>• Hovering adjustment</li> <li>• Easy installation, door clips on &amp; off without tools</li> <li>• Limited life-time warranty</li> </ul>

Planning

Installation Dimensions (mm) - Symmetrical doors

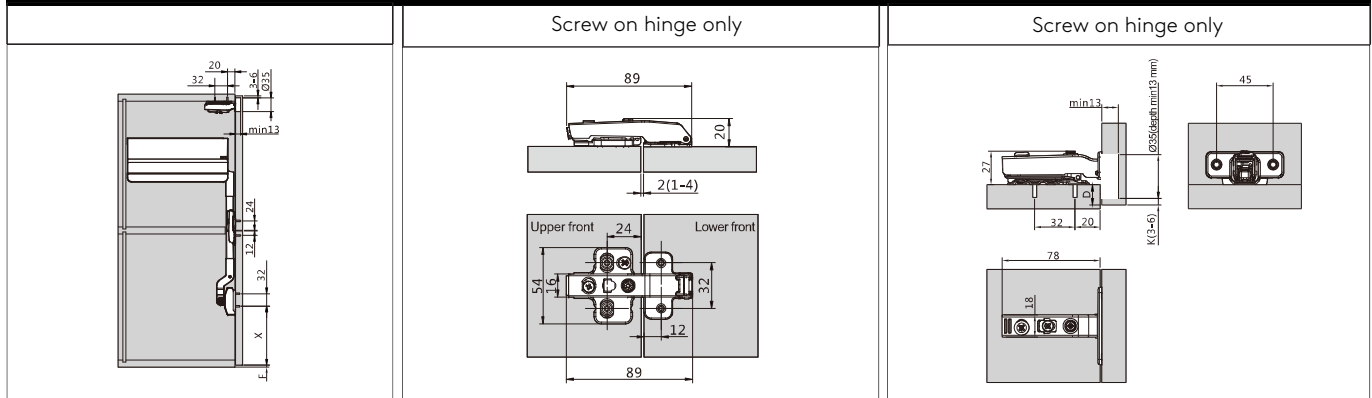


Cabinet Height KH(mm)	H(mm)
480-589	KH x 0.3-28
590-1040	KH x 0.3-57
<b>Example</b>	
Cabinet height KH=500 H= 500 x 0.3-28=122	
Cabinet height KH=800 H=800.0.3-57=183	

Cabinet Height KH(mm)	X(mm)		Example			
480-1040	KH -H-S-F		Cabinet height KH=600 H= 600 x 0.3-57=123 S=356 (see below table) Gap F=2 X= 600-123-356-2=119			
Cabinet Height KH(mm)	S(mm)	A(°)	B(mm)	C(mm)	Q(mm)	Y(mm)
650-729	386	~115-102	160-228	335-226	355-428	144-74
730-799	426	~115-105	181-250	372-293	390-450	162-108
800-879	461	~115-105	202-280	404-318	422-494	176-115
880-959	501	~115-105	225-301	440-361	458-529	194-134
960-1040	541	~115-105	245-335	476-405	493-566	214-148

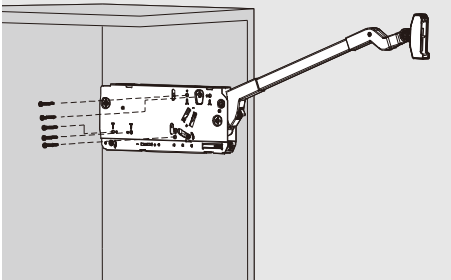
SFA= Door overlay on the side panel  
F=Gap

Installation Dimensions (mm)

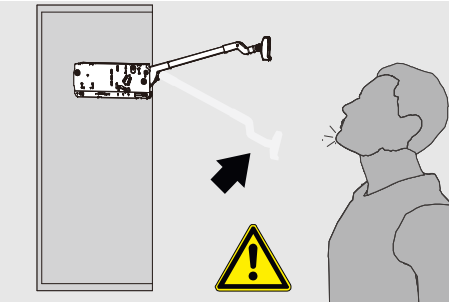


Drilling distance K(mm)	3	4	5	6
Door overlay D(mm)	15	16	17	18

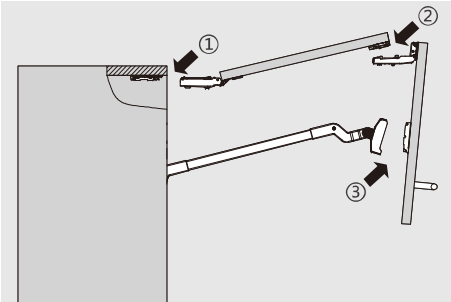
**Assembly**



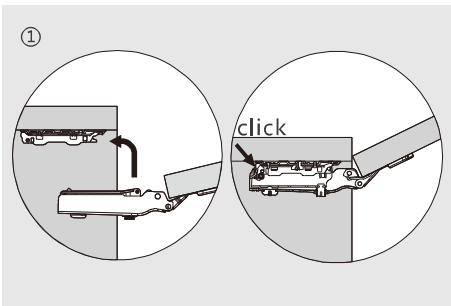
Assembly



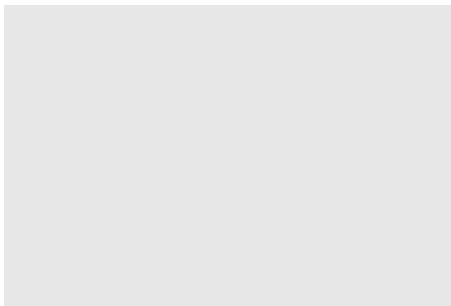
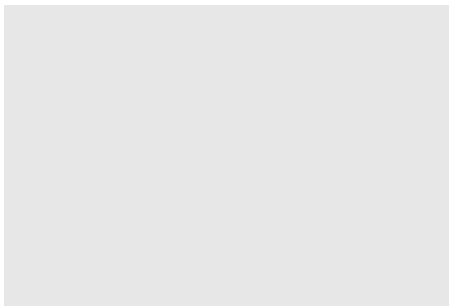
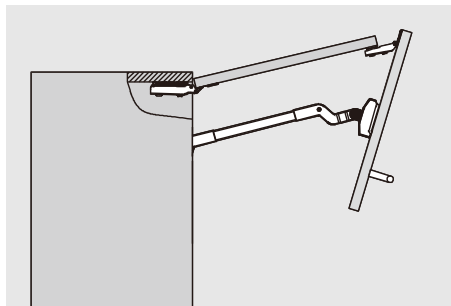
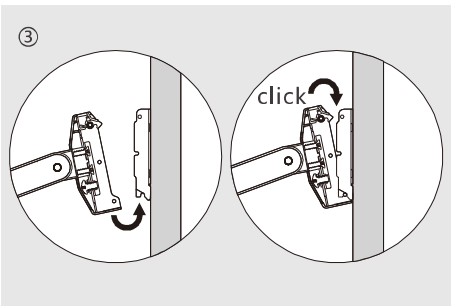
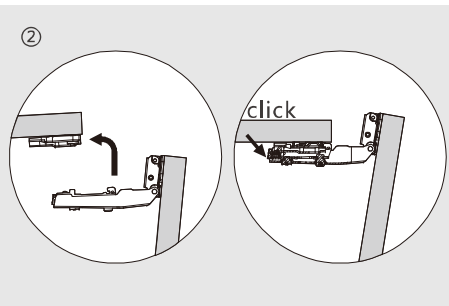
The arm of this device could spring up and down cause injury.  
Do not push the arm down without door attached.



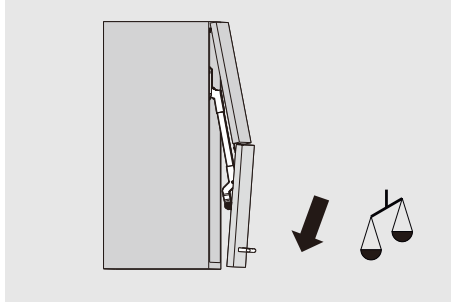
Door Assembly



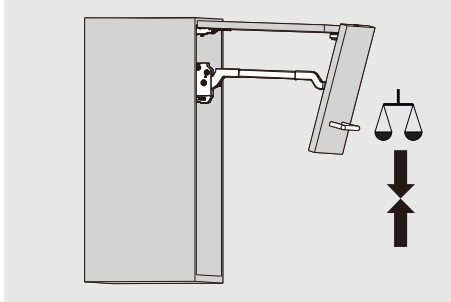
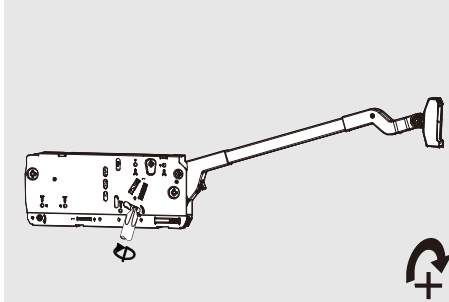
Door Assembly



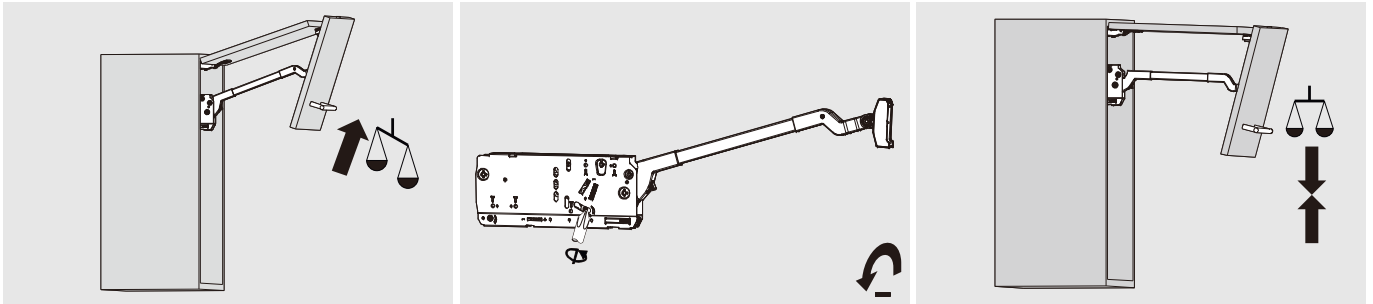
**Hovering Adjustment**



Adjustment

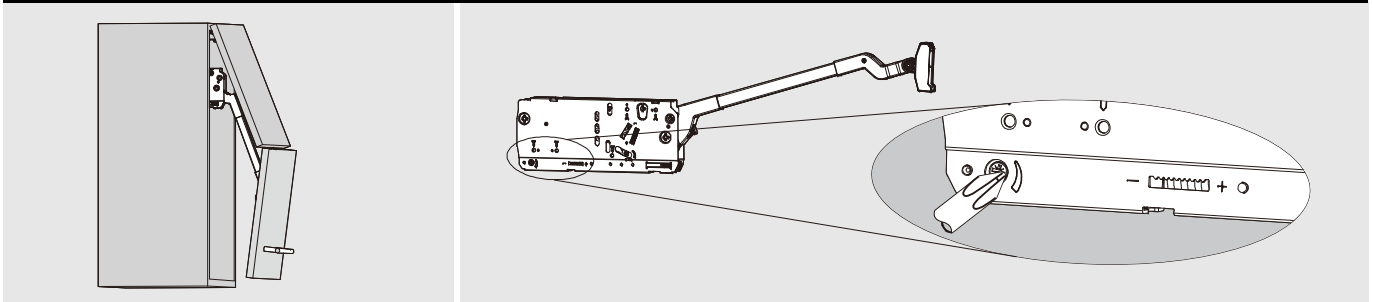


Hovering Adjustment



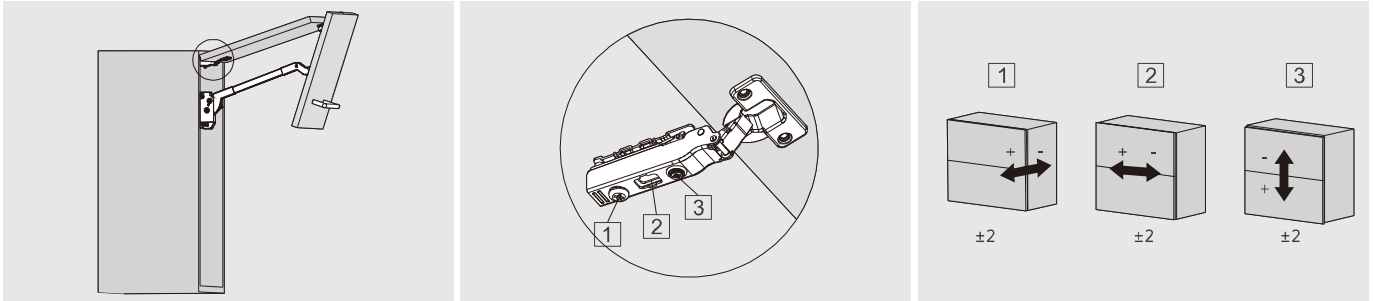
Adjustment

Closing Speed Adjustment



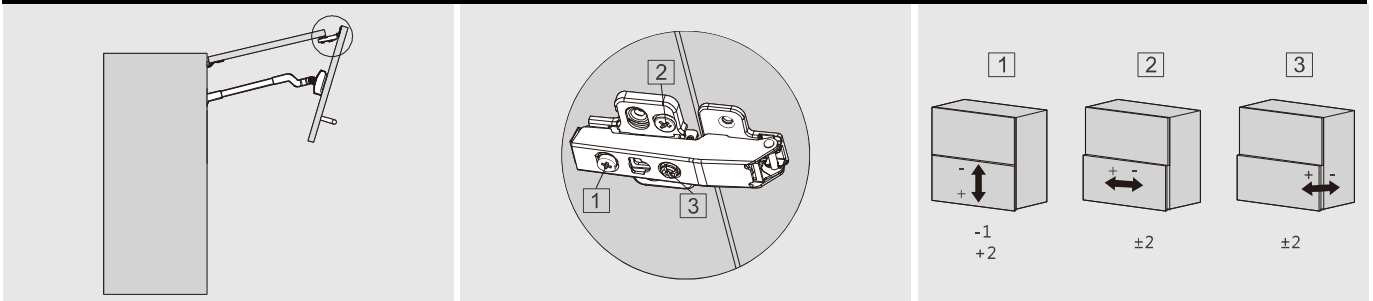
"+" increasing soft-closing time (turn adjustment screw counter-clockwise)  
 "-" reducing soft-closing time (turn adjustment screw clockwise)

Upper Front Adjustment



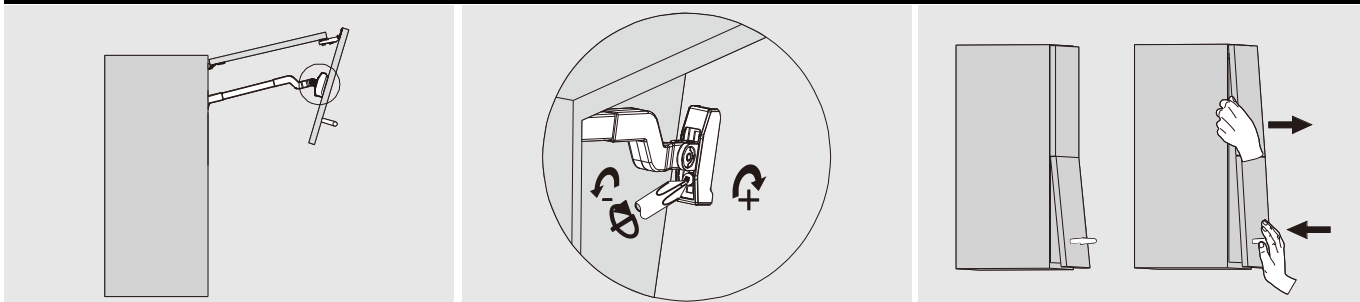
Screw on hinge only

Lower Front Adjustment



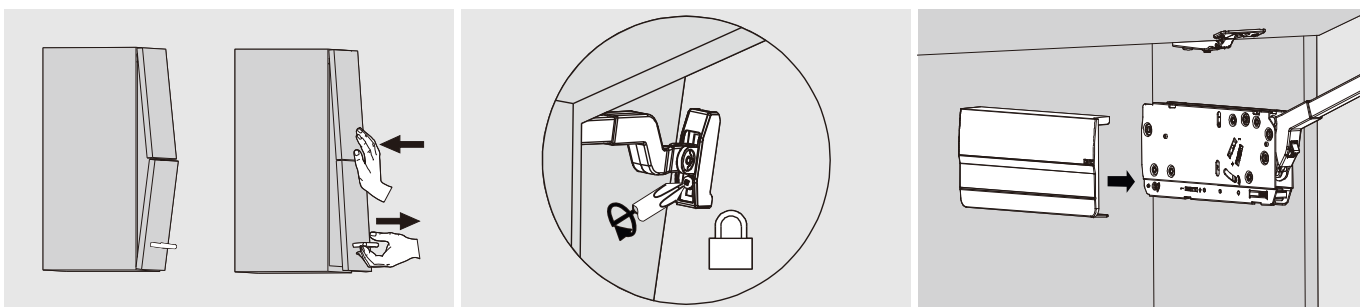
Screw on hinge only

Door Assembly



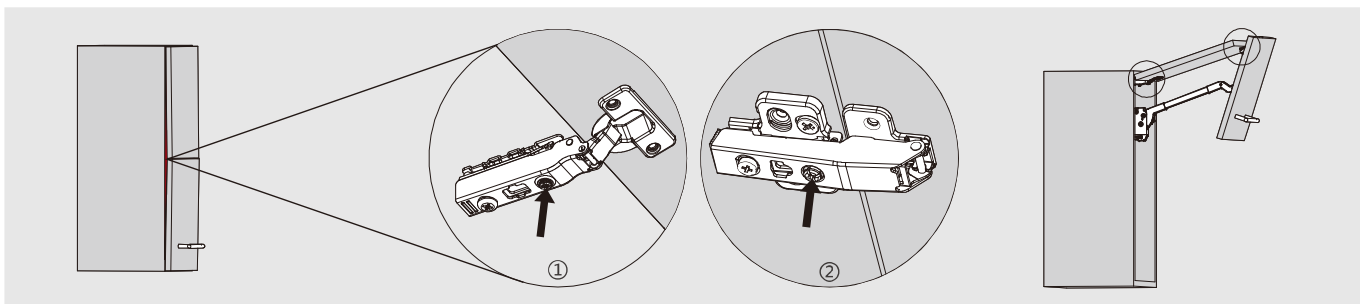
"+" Loose the screw properly when the automatic positioning is too tight to move during door adjustment  
 "-" Tighten the screw properly when the automatic positioning is too loose to move during door adjustment

Adjust position of the door



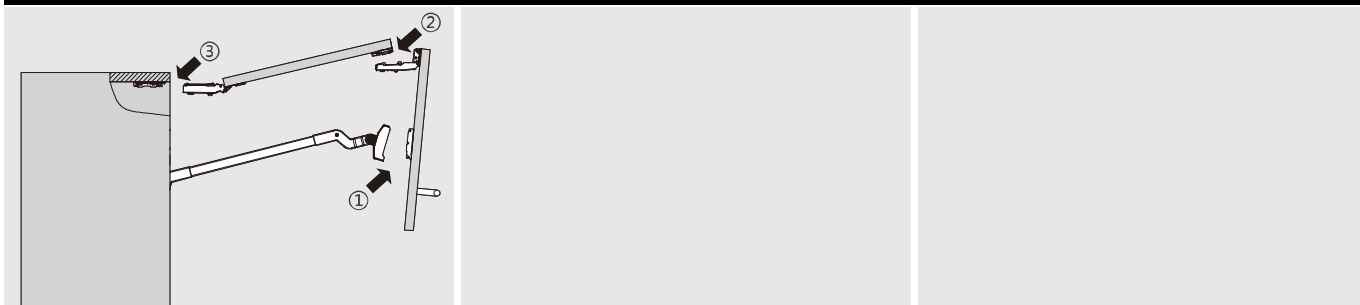
Adjust position of the door

Lock screw

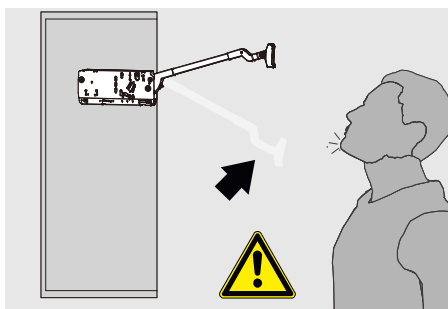
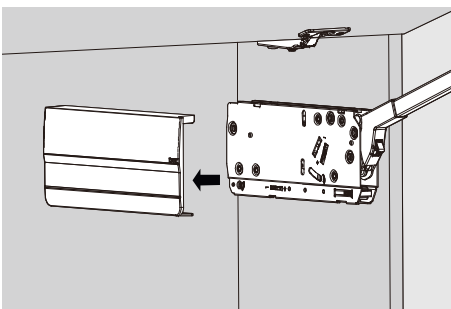
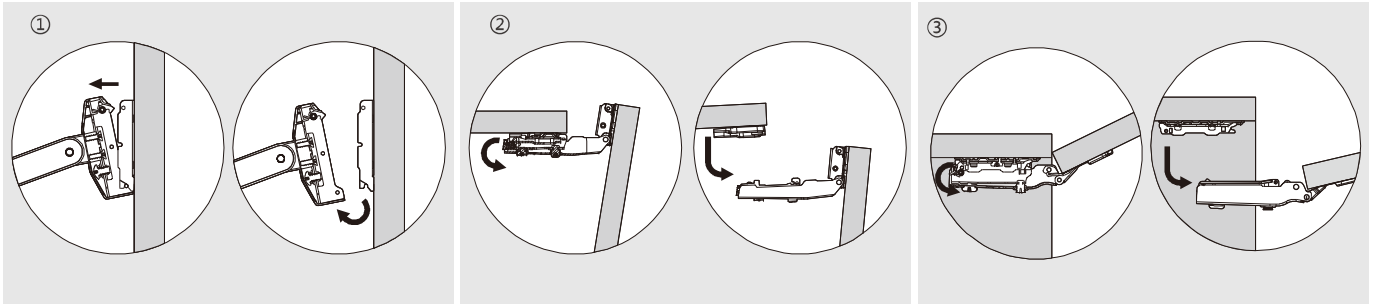


If there is a small gap between the doors and the cabinet sides, fine-tune the position of the doors with the adjustment screws

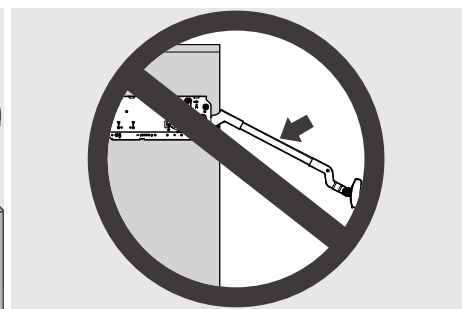
Removal



Removal



The arm of this device could spring up and cause injury!



Do not push the arm down without door attached