

look inside



nikpol[™]

SlimLine+

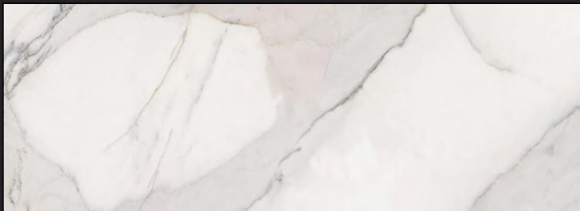
compact laminate
instructions for installation & use

12mm slim line

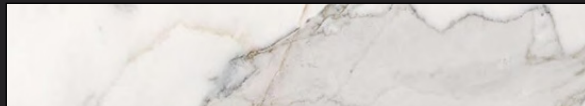
Slim Line countertops combine high quality and impact resistance with exceptional aesthetics. The high pressure and temperature during the production of the material means that Slim Line countertops are protected against water damage and do not absorb moisture. The closed structure of the top makes it resistant to impact and protects during assembly and use. Slim Line countertops are hygienic and safe for food.

sizes:

4100mm x 1300mm



4100mm x 650mm



benefits: impact, dirt, water and temperature resistant. Easy to clean and hygienic.



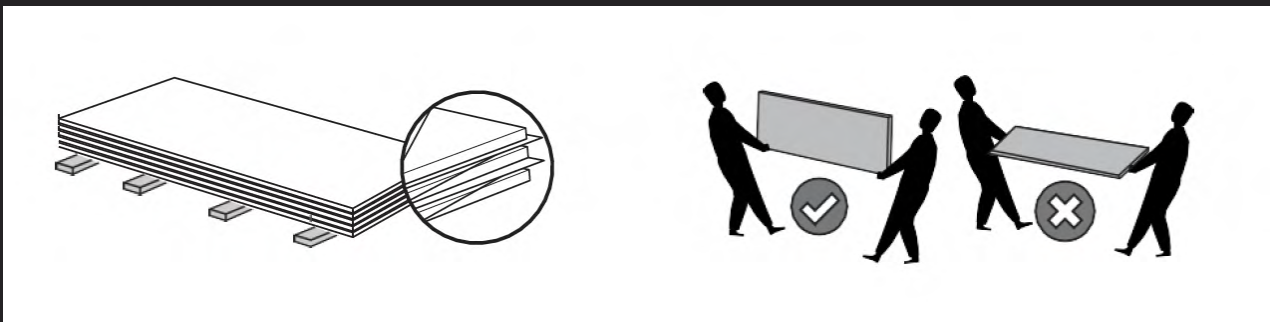
featured
calacatta olympus

storage

The plates must be stored in a dry and covered place, at a temperature of 15-25°C, relative air humidity of 50%, at a minimum distance of 1.5 m from a direct heat source.

- During loading and unloading, the plates must be lifted. Do not push or pull them from the edge.
- Do not place plates with damaged protective foil. Do not remove foil prior to installation or cutting if plates are to be stored.
- The pallet must be well covered to prevent dust and dirt from entering on or between the plates.

IMPORTANT: Improper storage may result in permanent deformation of the plates.



We recommend acclimatizing worktops to room temperature prior to installation. When storing, make sure that the tops are stored horizontally, face up and supported on brackets, separated by safety spacers. The tops can be stored upright for a short period of time (no more than 24 hours) if necessary during assembly. If it is necessary to store several tops, when stacking them, make sure that their surface is clean and free of any contamination that could cause them to deteriorate. We recommend using several layers of cardboard as spacers between individual tops.

Always wear earplugs and dust masks (FFP3) when cutting worktops. Ear protection is also required when working with power tools.

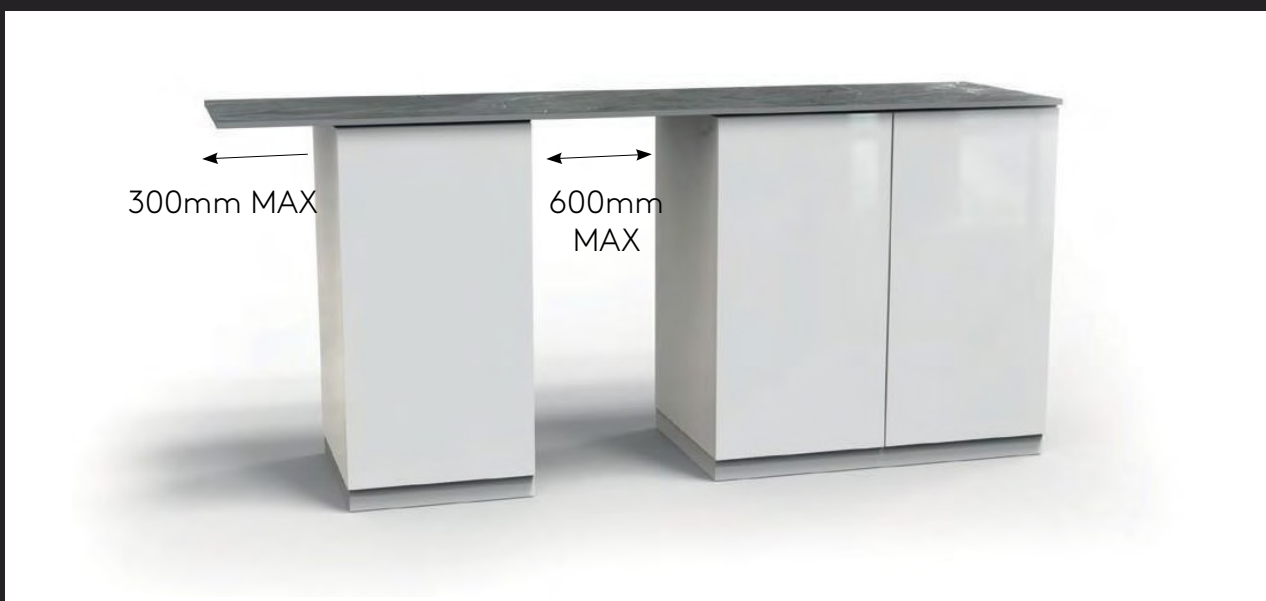


installation instructions

- When installing a compact worktop, pay attention to ventilation and provide space for air flow under the worktop. The worktop must be mounted on the cabinet frame.
- Mounting the worktop on a solid, enclosed surface may cause the worktop to warp.



Worktops must be attached to cabinets with silicone sealant. Due to their thickness, screws are not suitable for fixing these surfaces. Silicone should be applied at a distance of 10 mm from the front edge of the body.

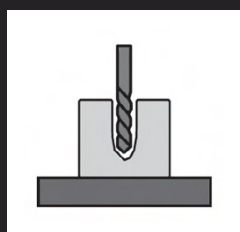


- The unsupported sections of the worktops must not exceed 600 mm. The overlaps must not exceed 300 mm. For distances greater than 600 mm, slats are required. No worktop joints shall be over unsupported surfaces.

installation of slimline countertops

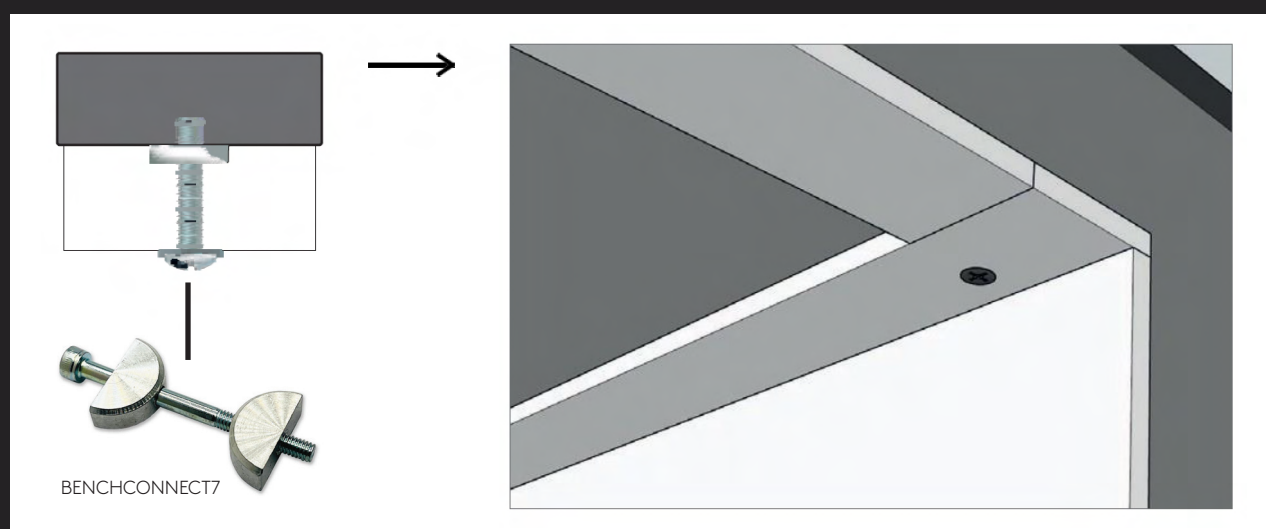
The solution for invisible fastening is the joining of SlimLine tops with the specially designed silicone adhesive systems. It is always recommended to perform a fit test without using silicone adhesive. Installation must always be done on the cabinet frame. Provide adequate ventilation on both sides when installing the plate. Therefore, the plates must be installed on a structure with adequate load-bearing capacity, in order to ensure air circulation in the front and back of the panel. If the basic elements do not have sufficient load-bearing capacity, they must be reinforced with additional components.

alternative method of fastening - screws



When screwing, make sure you have a solid base. For drilling in worktops, drill bits for plastics are the most suitable. These are twist drills with an apex angle $\leq 90^\circ$.

Drill holes for inserts in the bottom of the worktop, making sure there is at least 3mm of material left (hole depth of 9mm). The hole must have a diameter of 8 mm for the inserts provided in the installation kit package. Be careful not to puncture the worktop.



As with assembly using a dedicated adhesive kit, care must be taken to ensure adequate ventilation after the worktop is installed and to leave the top of the cabinets open.

cut to size

1. Secure the surface, measure and mark for cutting.
2. Cut with a circular or rail saw. We recommend cutting in 3 passes.
3. Finish the edges with a milling machine.

Once all the components are ready, the worktop must be dry-fitted to make sure that there are no visible cracks or gaps between the joints.



cut-out

1. To mark the dimensions on the countertop, use the measurement or template provided with the product. The distance between the cut-out and the joint of the adjacent countertop must be a minimum of 150 mm and a minimum of 40 mm from the front of the countertop.



2. Drill the corners of the template, then use a milling machine at a 45 degree angle. Make holes 9mm wide and 10mm deep.

edge profiling

The following illustrations show examples of profiles that can be obtained by milling. Note: We recommend using a sample item to ensure the style/cut-out is correct.

Top bevel (upper) 45°



Up/down 2mm

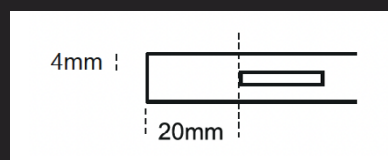


Bottom bevel



joining the worktop with the silicone system

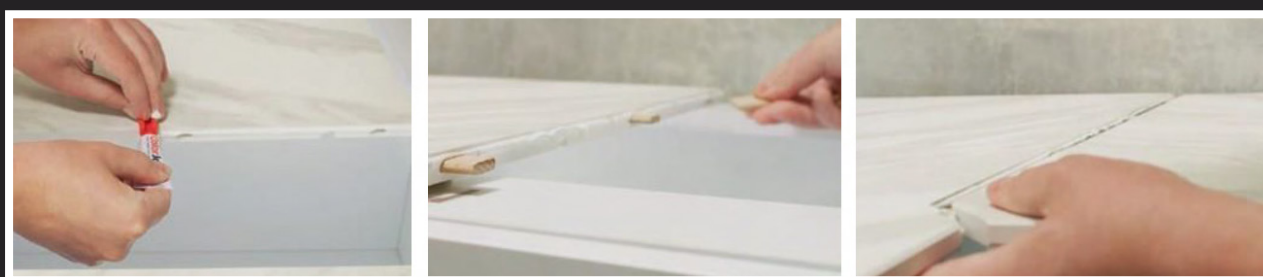
Using a milling machine, make biscuit cuts on the edges of the worktops. They should be 4mm from the top edge and evenly spaced.



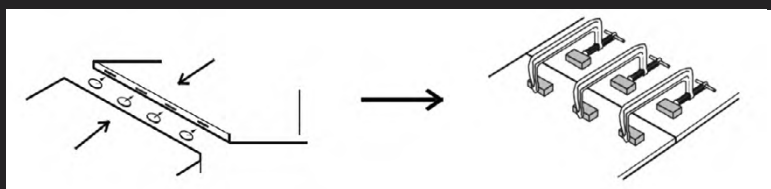
In order to perfectly join the worktops, use the colour-matched silicone sealant. It is the only product dedicated for this purpose on the market. It comes in 3 colours, thanks to which the colour of the gasket is as close as possible to the colour of the worktop. silicone is available in 20g tubes, which is enough for over 120cm of sealing. Each joint must be sealed around the entire perimeter of the worktop cross-section. Before applying the sealant, clean both edges with the acetone included in the kit.

Open the tube of silicone and the special applicator included with each tube. The applicator helps you to apply the sealant perfectly on the cross section of the countertop, and after joining the countertops - to remove its excess. Apply the sealant to the entire cross-section of one of the connected countertops. Match the ends correctly, line them up perfectly and tighten the clamps. If too much silicone material is applied to the joint, use the other side of the applicator to remove it.

Remove the remaining sealant from the surface of the countertop. To do this, gently wipe the surface of the countertop with a cloth over the joint that has been created. CAREFUL! Do not wipe along the gasket, as this action can remove the sealant from the gap. All handling of silicone must be completed within 15 minutes from opening the tube.



CORRECTLY applied silicone sealant ensures 100% tightness and durability of the worktop.



Use a sander or sanding block to finish the edge of the plate. Use sanding pads to get a perfectly finished edge. Between sandings, always wipe the edge with a damp cloth to

vertical installation of the plate

300mm MAX



Start by measuring the height and width of the kitchen wall surface where you plan to mount the plate. Cut the plate to size.

Prepare the surface. Attach the spacer strips to the wall. The tape must be at least 5 mm thick and at least 15 mm wide. It is recommended that the slats be spaced at MAXIMUM 300 mm.



Before applying the sealant, clean both edges with the acetone included in the kit. Fix the HPL plate to the prepared slats with colour-matched silicone sealant. Press the plate against the wall firmly, making sure it is horizontal. Remove any loose silicone preparation from the edges before drying.



Apply a thin layer of linseed oil around all exposed edges.

When installing a compact plate, it is necessary to maintain ventilation and leave room for air flow behind the plate.

upkeep and maintenance

Countertops should only be wiped with a mild detergent and water. Then rinse with warm water and lightly polish the surface.

Note: Using linseed oil is an excellent way to protect the edge of the counter and the drain grooves. This oil is designed to seal the core and minimize the risk of staining. Dirt

- Laminate countertops have a solid, non-porous surface that is resistant to stains, mould, fungus and bacterial growth.
- If stains occur, use a mild detergent and water to remove them.
- Persistent stains can be removed with a mixture of household bleach and warm water. Important: Make sure to wear gloves when using household cleaners.
- Grooves on open core drains (white/grey) are more prone to dirt.
 - After installation, apply linseed oil (1 coat) to seal the core.
 - Products such as tea, coffee and red wine must be removed immediately.
 - If stains appear in the grooves, follow the cleaning instructions above.

NOTE: Do not use acidic or abrasive detergents.
Avoid excessive washing.

- If stains appear in the drain grooves, remove them with a mild detergent (non-abrasive cleaning cream) and water. For persistent dirt, a cloth with 400 granulation can be used. To avoid stains, wipe the standing water from the drain grooves within 6 hours.



nikpol®

SlimLine +

Nikpol Pty. Ltd.

compact laminate: instructions for installation & use

The colors displayed in this flyer are indicative and may vary from the actual product. For the most accurate color match, please visit the Nikpol website at www.nikpol.com.au to order your color samples.

Tel 1300 645 765
Web www.nikpol.com.au
Email sales@nikpol.com.au

Head Office (VIC)
6-12 Fairchild Street
Heatherton VIC 3202

QLD
19 William Farrior Place
Eagle Farm QLD 4009



📍 @nikpolptyltd 🌐 @nikpolaustralia 📱 #nikpol 🏢 /company/nikpol/ 📧 @nikpolptyltd