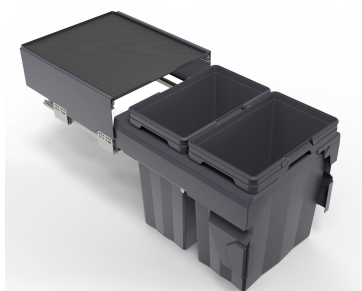




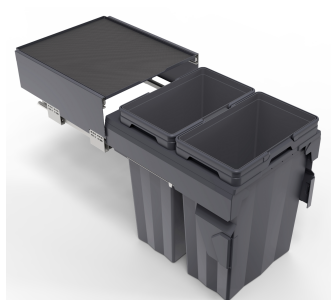
Teramo Bins

- Drawer integrated bins
- Removable bins for easy rubbish disposal and cleaning
- Bins are tapered making removing rubbish easy
- Comes with hygienic lid to seal odour in and keeping pests out
- Lid can act as storage shelf
- Comes with Smooth drawer runners
- Soft closing
- Standardised width to fit 450mm module
- Stylish Onyx Grey finish



TERAMO-56L Teramo Bin 56L

- Width: 412-430
- Depth: 520
- Height: 460
- Volume: 2 x 28L



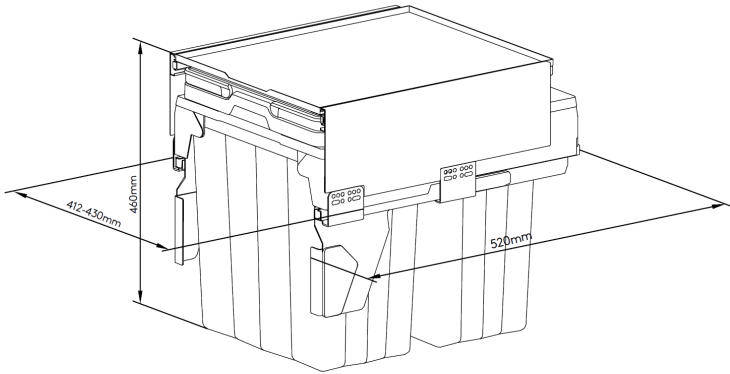
TERAMO-66L Teramo Bin 66L

- Width: 412-430
- Depth: 520
- Height: 540
- Volume: 2 x 33L



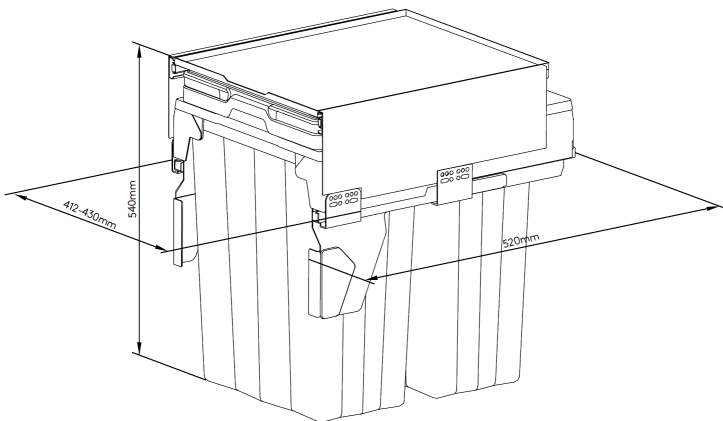
TERAMO-74L Teramo Bin 74L

- Width: 412-430
- Depth: 520
- Height: 620
- Volume: 2 x 37L



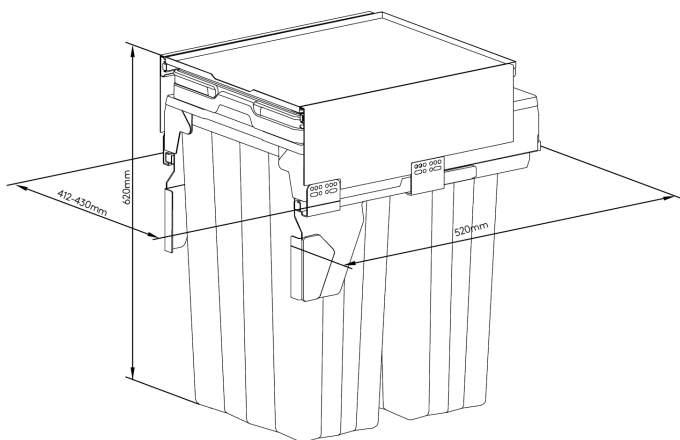
TERAMO-56L Teramo Bin 56L

- Width: 412-430
- Depth: 520
- Height: 460
- Volume: 2 x 28L



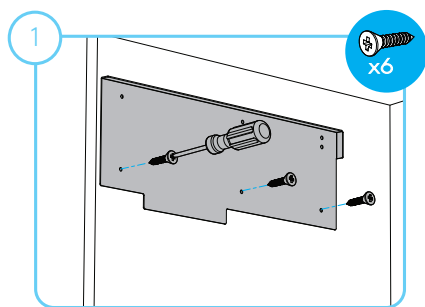
TERAMO-66L Teramo Bin 66L

- Width: 412-430
- Depth: 520
- Height: 540
- Volume: 2 x 33L

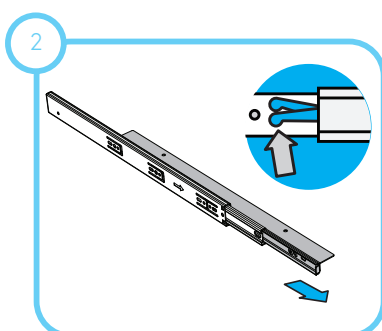


TERAMO-74L Teramo Bin 74L

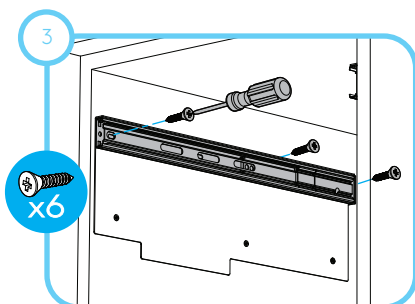
- Width: 412-430
- Depth: 520
- Height: 620
- Volume: 2 x 37L



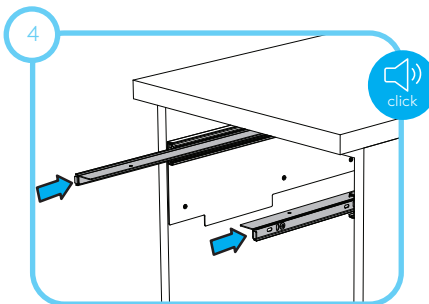
Attach both left and right metal plates to cabinet wall using supplied screws.



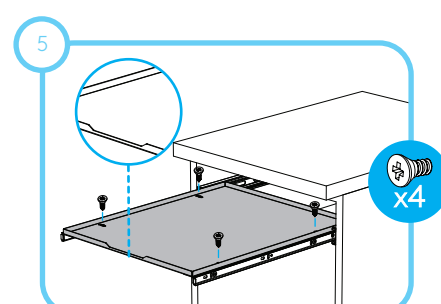
Release left and right tray runners from bracket.



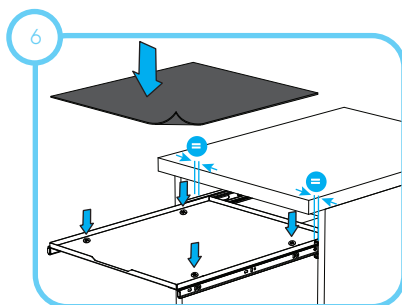
Install the top runners with another 6 bracket screws.



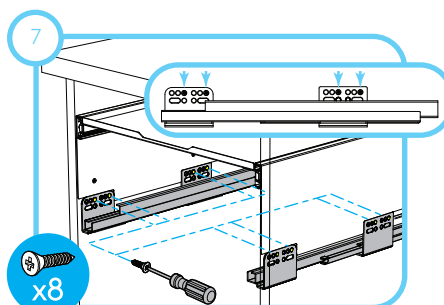
Install top runner brackets. Makes click sound.



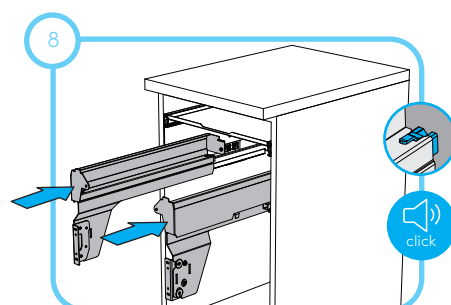
Install metal tray loosely with screws, allowing for adjustment.



Adjust metal tray position, tighten screws when parallel. Place mat on top.



Align lower runners flush under metal plates. Drill and screw lower runners.



Install metal brackets. Makes click sound.

Suitable for the following Cabinet Widths. For Imperial sized cabinets with 5/8" sides please refer to the related Metric positioning. Images may not reflect actual bin configuration.



450mm/18"

* For scale measurements please visit our website

STEP 3/5/9

x20

STEP 7

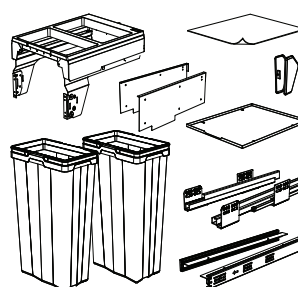
x4

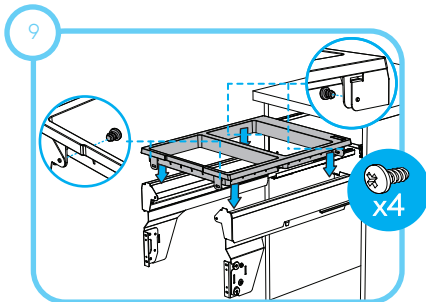
STEP 11

x4

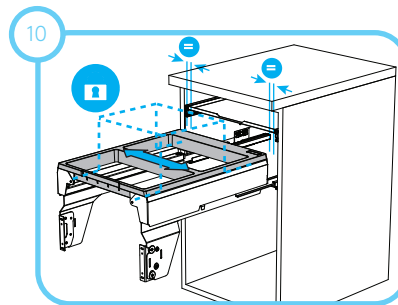
STEP 15/17

x8

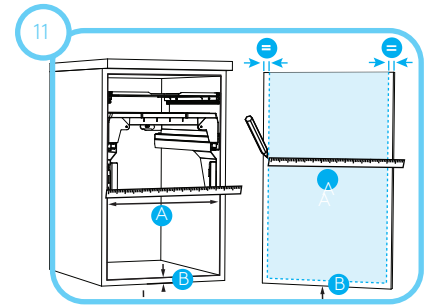




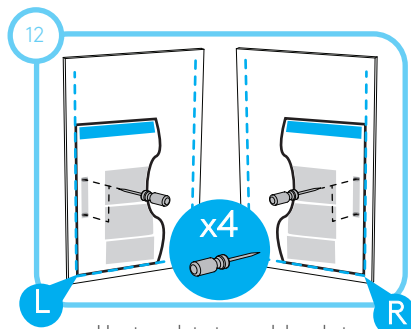
Install plastic tray loosely with screws, allowing for adjustment.



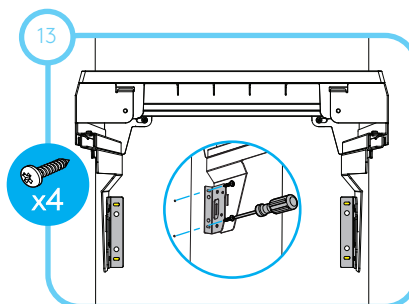
Adjust plastic tray position, tighten screws when parallel.



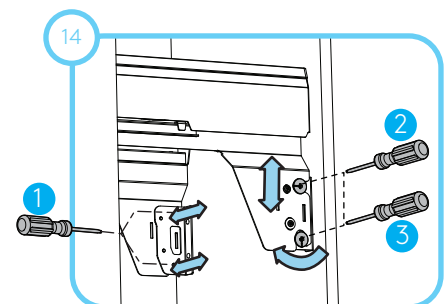
Measure and mark the cabinet bottom and side edge on the door.



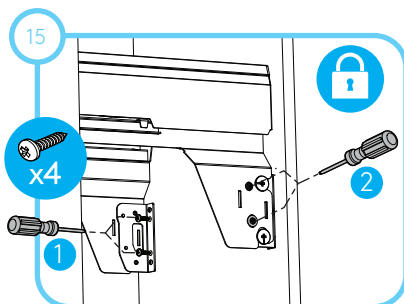
Use template to mark bracket holes on the door.



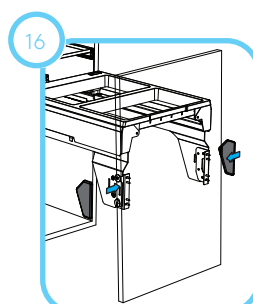
Screw door arms to cabinet using the slotted holes.



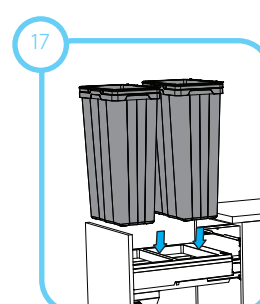
Adjust left and right then tighten. Adjust vertical and tilt.



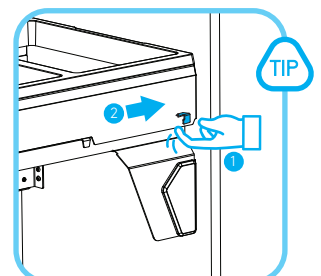
Screw the front bracket to the door. Lock vertical and tilt adjustment.



Install screw covers.



Install bins.



To release brackets from the runners, click switch on the sides of the brackets and slide out.