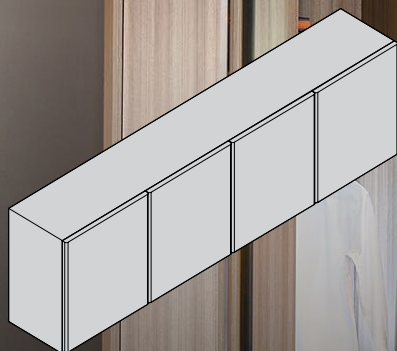


look inside



nikpol

dtc cf bifold sliding door system
installation instructions



track-pro cf series folding sliding door system

Designed for effortless opening with a folded mechanism, this system offers precise adjustments for a perfect fit. Height adjustment of $\pm 2\text{mm}$ and depth adjustment of $+3\text{mm}/-2\text{mm}$ ensure flexibility, accommodating door thicknesses from 16-25mm and supporting door heights up to 2800mm.

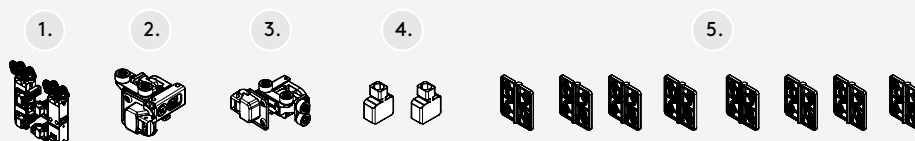
cf series side mounted folding door with 4 door panels for 16-25mm thick doors

cf series folding sliding door system

Code **Set/ctn**

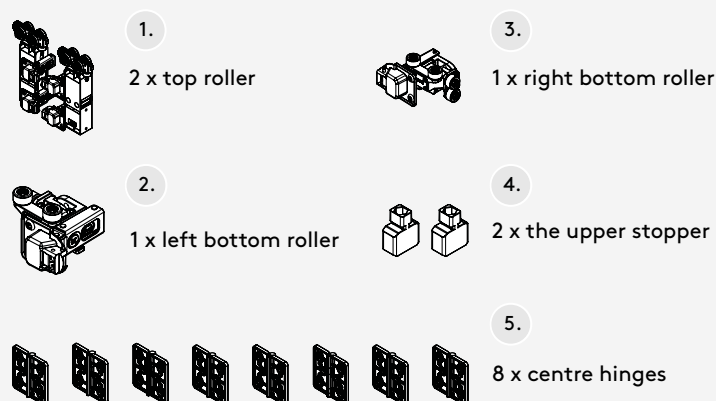
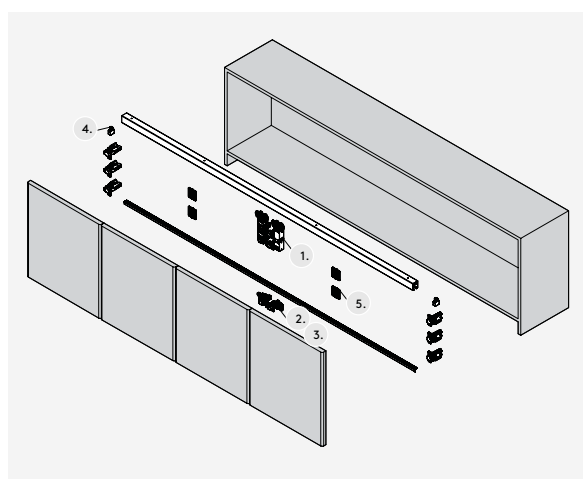
DTCWCFGDA 1

* 2 doors each way only



Note: Number of hinges required on first door depends on the height and weight of door.
See DTC Pivot Star section using 95° thick door soft close hinge.

kit package includes:

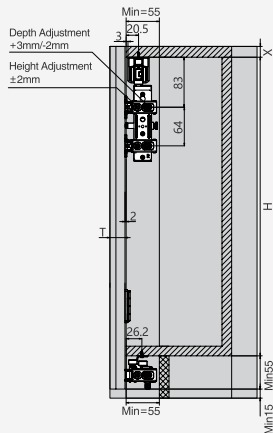


cabinet dimensions (mm)

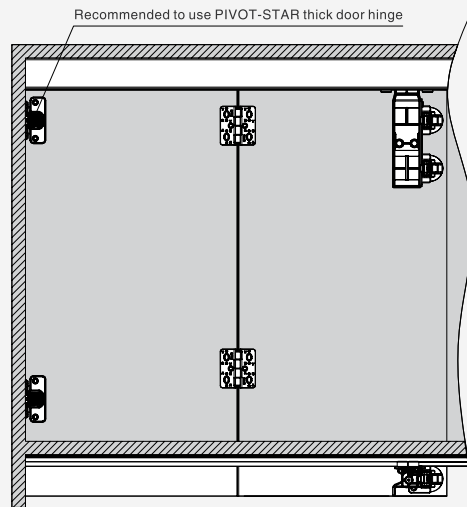
X = Top panel thickness

H = Height from wardrobe top panel to bottom panel

Door thickness: $T = 16-25\text{mm}$



door installation (mm)

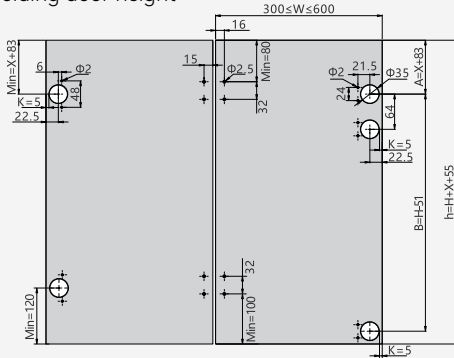


folding door drilling dimensions (mm)

X = Top panel thickness

H = Height from wardrobe top panel to bottom panel

h = Folding door height



* 11.5mm deep, 35mm diameter hinge roller holes

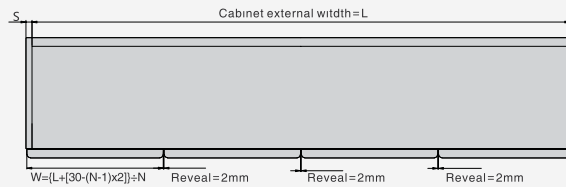
folding door installation dimensions (mm)

N = Number of door

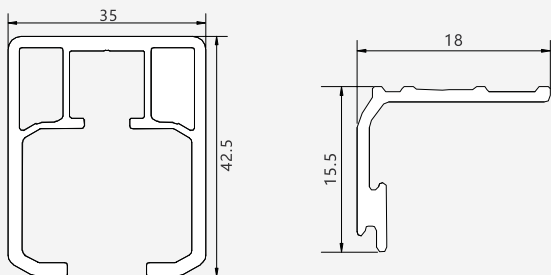
W = Weight of door

S = Door overlay

L = Cabinet external width



top/bottom track (mm)



Top Track

Silver

Item No: DTCWCFDGAC

Pcs/ctn: 10

Length: 3m

Bottom Track

Silver

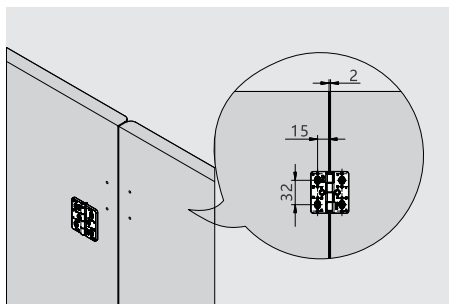
Item No: DTCWCFDGBC

Pcs/ctn: 10

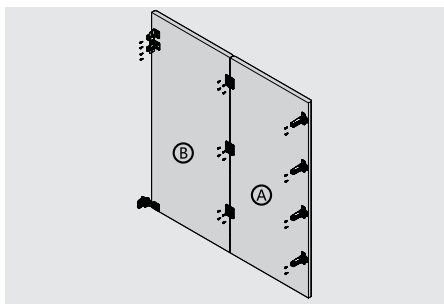
Length: 3m

assembly and adjustment

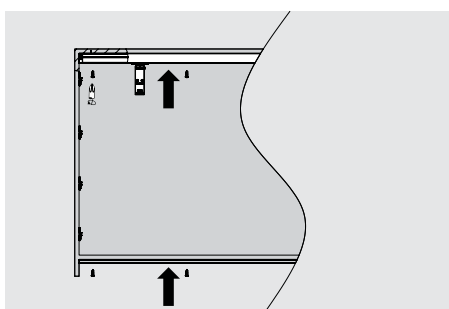
assembly for cf series side mounted folding door system of two doors



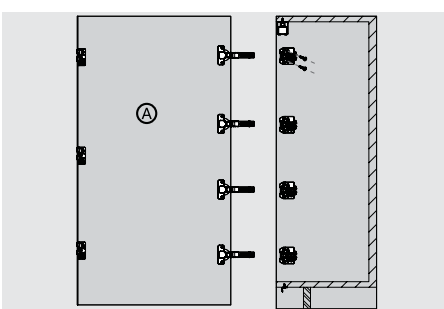
Centre folding hinge installation dimensions



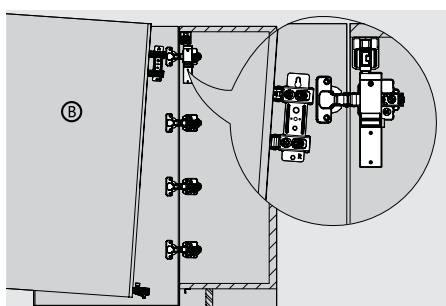
Hinge and centre folding hinge assembly



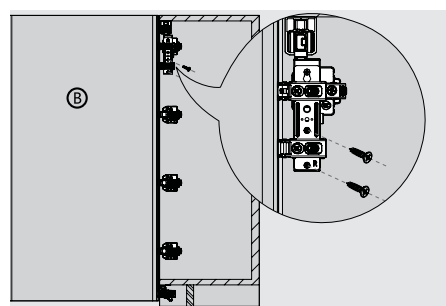
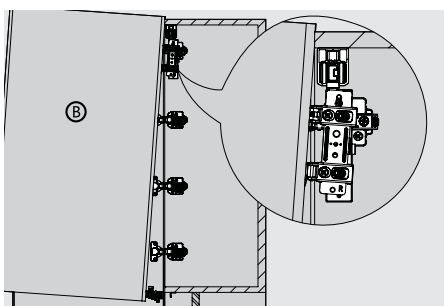
Install top and bottom track



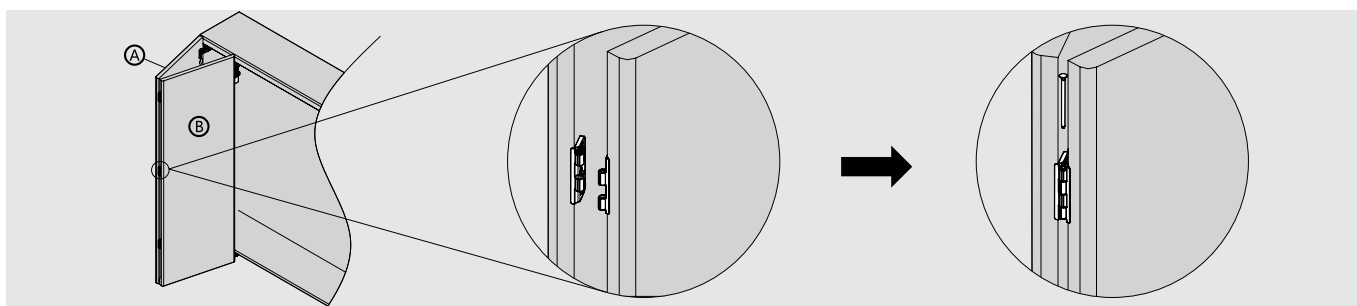
Install hinge plate



Hang door B top roller into the top track

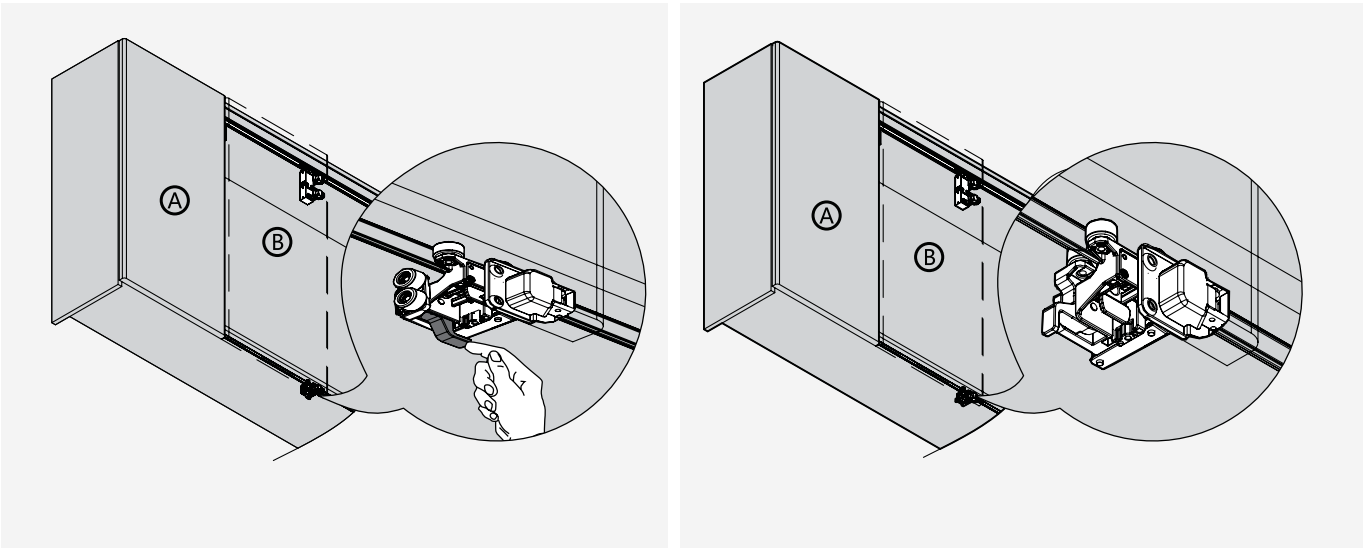


Fix the hanger firmly with screws



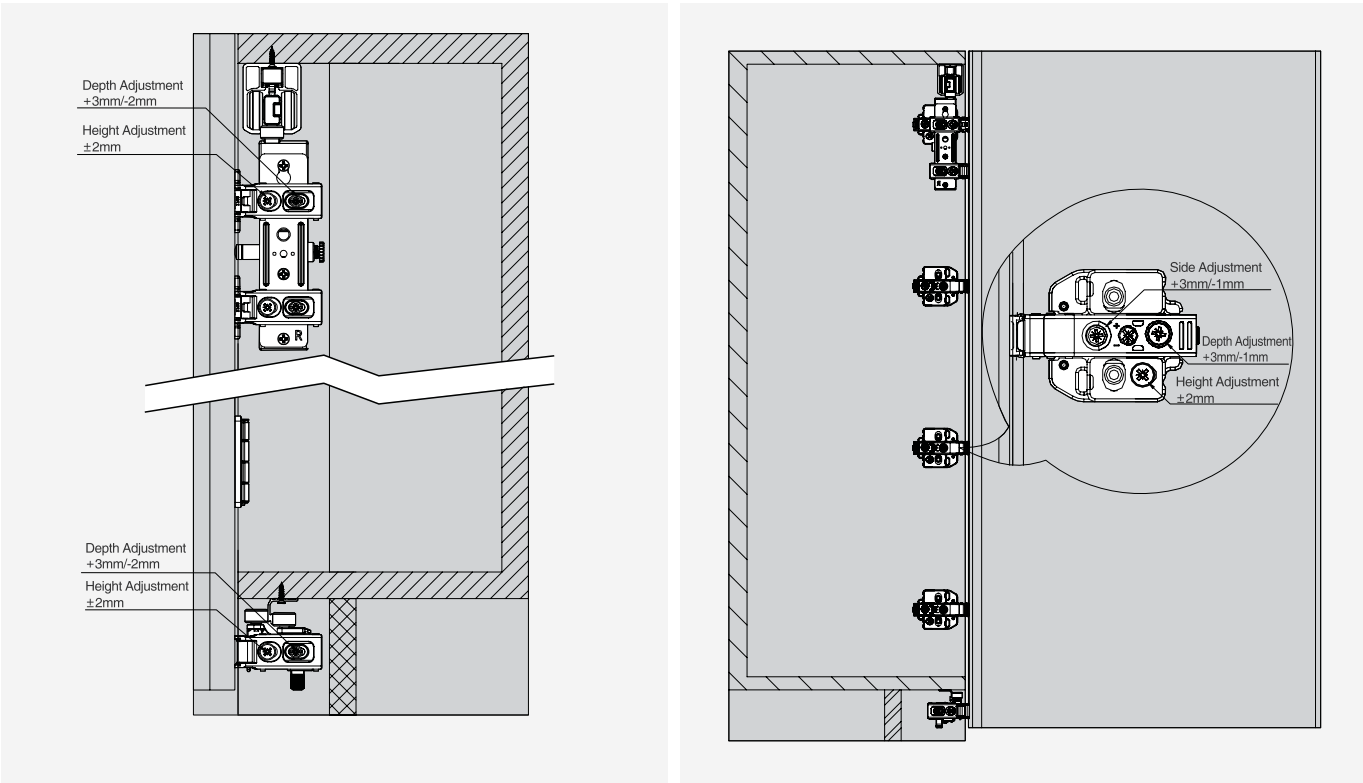
Fix the folding centre hinge with connecting shaft

assembly for cf series side mounted folding door system of two doors



Pull the lever to attach the bottom roller into the bottom track

adjustment





Nikpol Pty. Ltd.

dte cf sliding door system installation instructions

The colours shown in this flyer are an indication of the actual colour, for the most accurate colour-match sample, please visit the Nikpol website to order colour samples at www.nikpol.com.au

Tel 1300 645 765
Web www.nikpol.com.au
Email sales@nikpol.com.au

Head Office (VIC)
6-12 Fairchild Street
Heatherton VIC 3202

QLD
19 William Farrior Place
Eagle Farm QLD 4009